

MISTRA

**inframaint**

KEY FUTURE ISSUES OF INFRASTRUCTURE



# WATER

## - technology

How will future technologies affect the water and wastewater sector?

We present the three most important trends to spotlight.

MISTRA

inframaint

KEY FUTURE ISSUES OF INFRASTRUCTURE



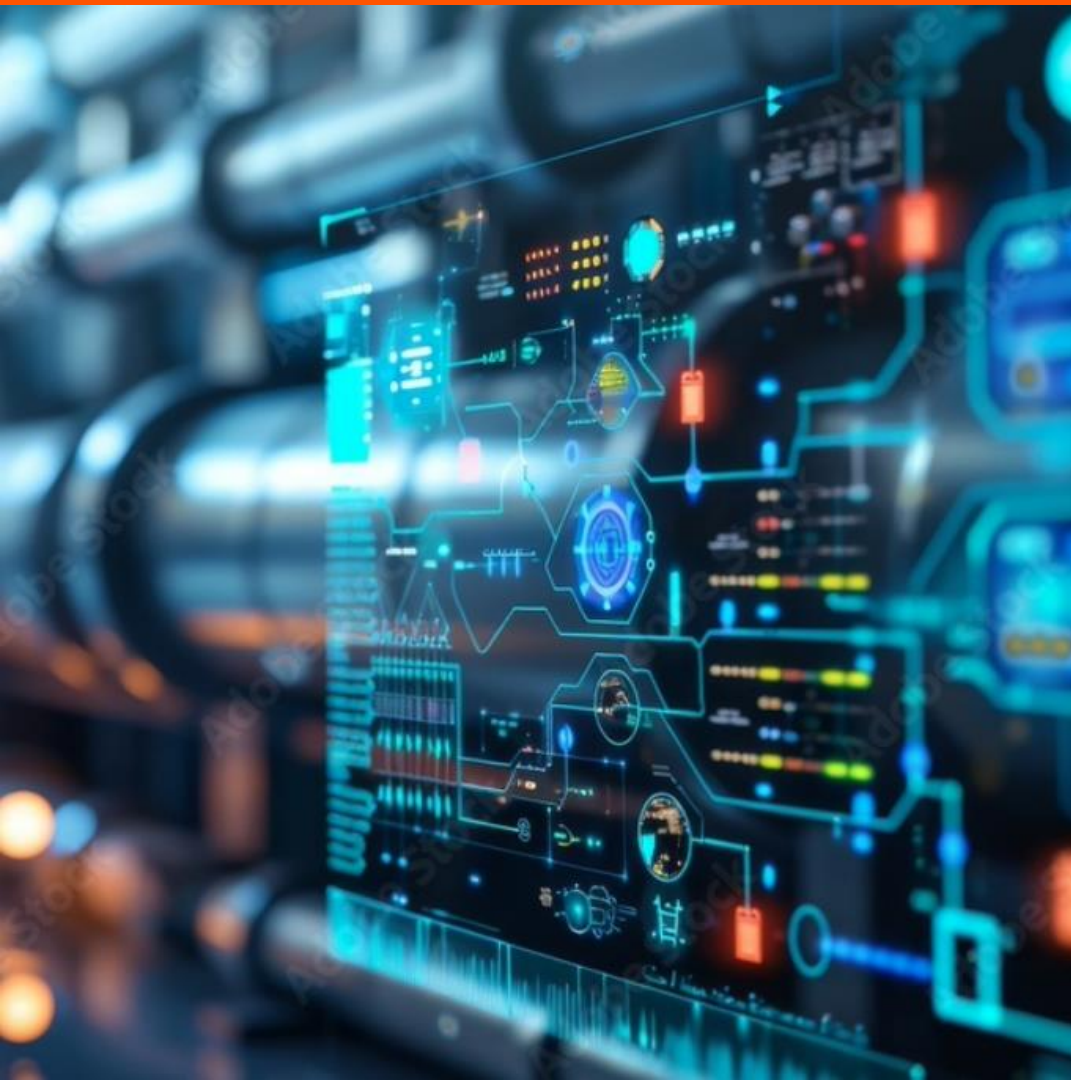
# #1: Autonomous systems

Enables, together with AI, continuous condition assessment and more predictive maintenance.

MISTRA

inframaint

KEY FUTURE ISSUES OF INFRASTRUCTURE



## #2: Sensors and meters

Enables improved analytical methods and data-driven decisions.

MISTRA

inframaint

KEY FUTURE ISSUES OF INFRASTRUCTURE



## #3: 3D models and visualization

New technologies create opportunities for process optimization and maintenance planning, but also require new skills and safety requirements.